

Exit 20m AT



UK
CA

ta 0÷40°C

230V-50Hz

UNI EN 1838

IP40

Beghelli

CSQ
ISO 14001

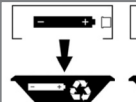
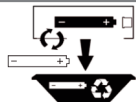
CSQ
ISO 9001

ICNet
INTEGRATED QUALITY

www.beghelli.com
BEGHELLI S.p.A. - Via Mozzeghine 13/15 - località Monteveglio 40053 Valsamoggia (BO) ITALY - Tel. +39 051 9660411 - Fax +39 051 9660444 - N° Verde 800 626626



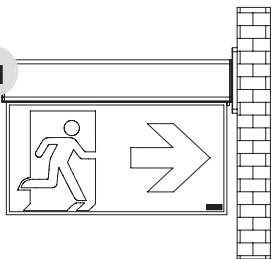
90 120 180 480



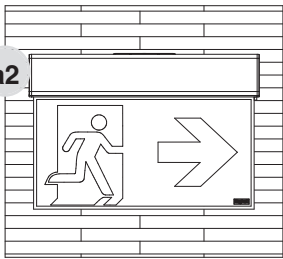
334.902.344 B

A

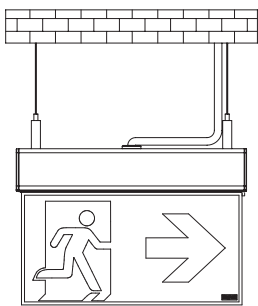
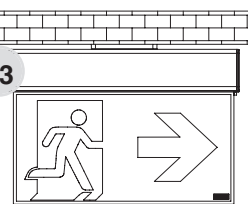
a1



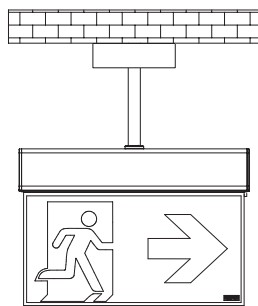
a2



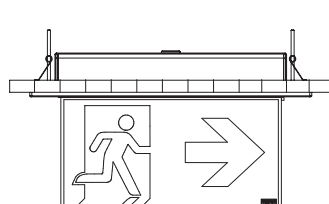
a3



+ COD. 14771

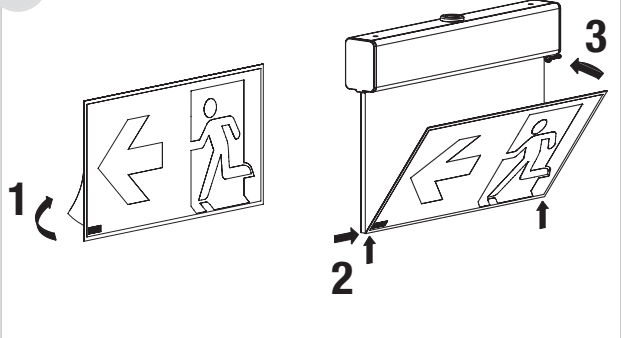


+ COD. 4315 (25cm)
+ COD. 4316 (50cm)
+ COD. 4317 (100cm)

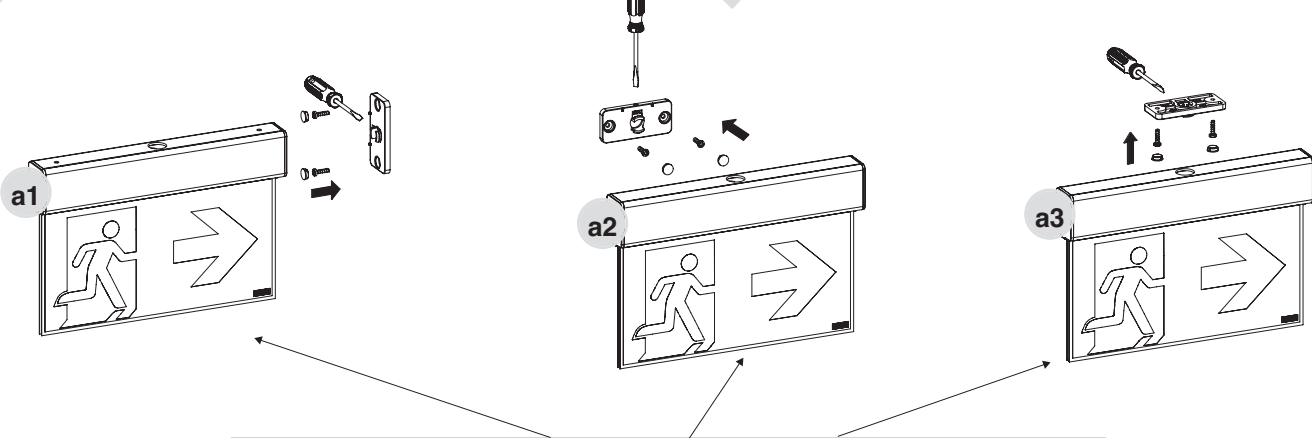


+ COD. 4312 (20m)

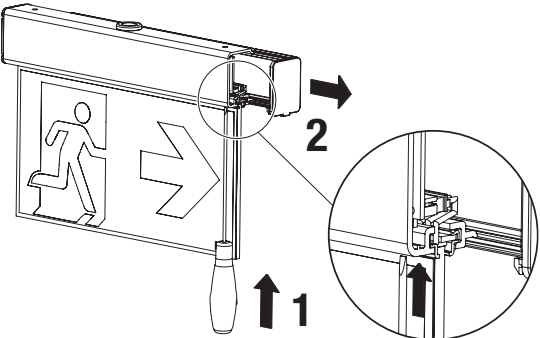
B



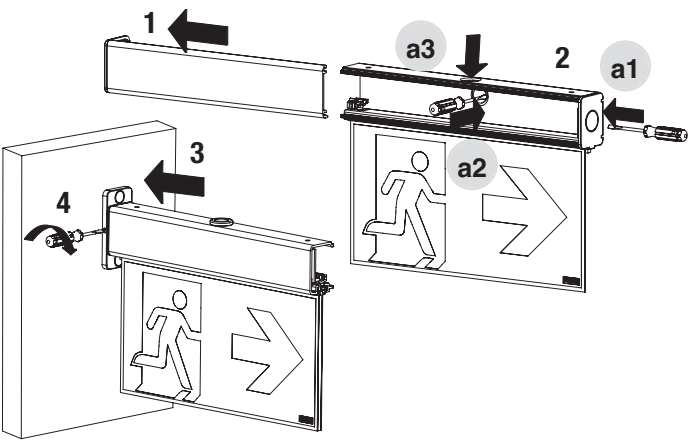
C



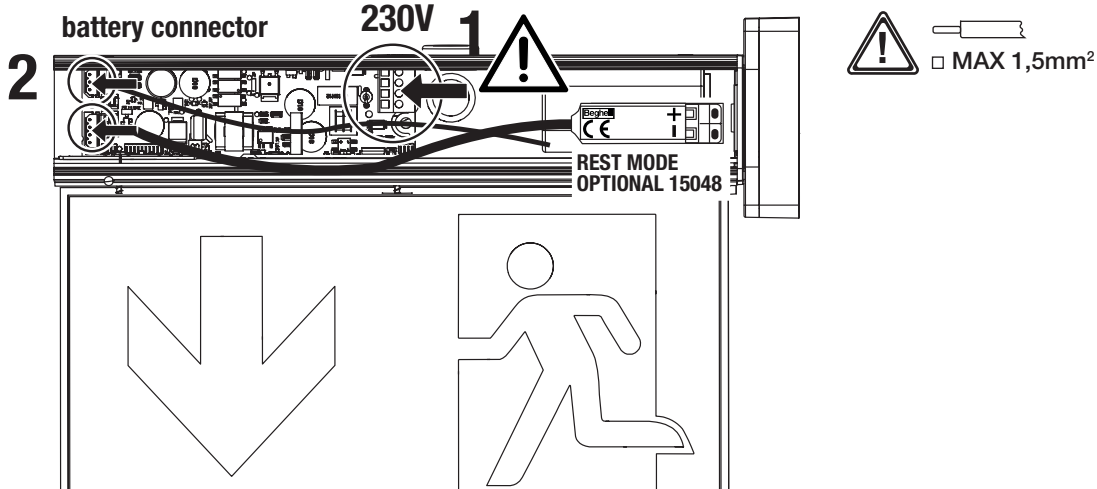
D



E



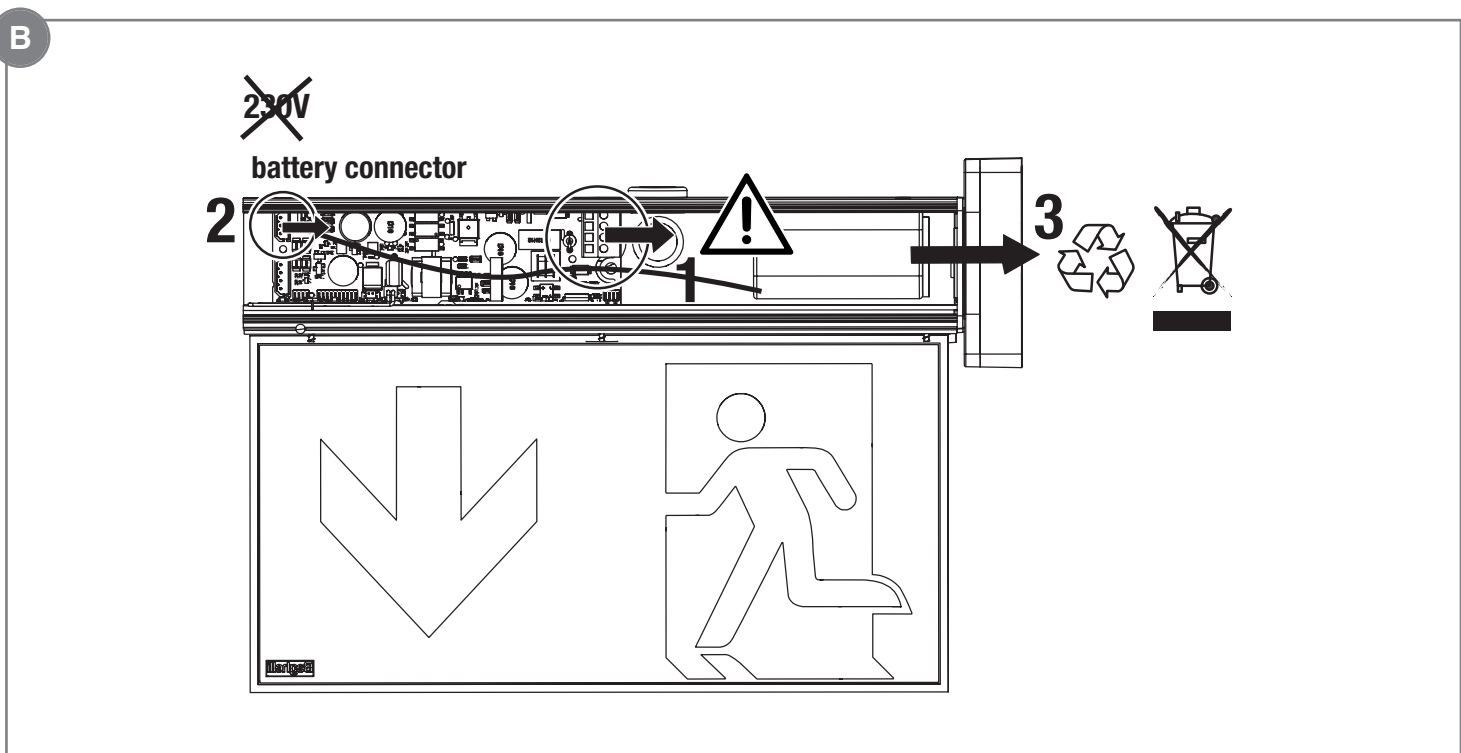
F







G

SA lamp	SE lamp	REST MODE OPTIONAL

A= Test
C= Interruttore accensione lampada/ Light switch



	230V 50Hz	COS φ	LED			
4385 <small>SE/SA</small>	33mA	0,53	24 LED	1h 1,5h 2h 3h 8h	LiFe 6,4V 0,6Ah	20m

* Per la gestione dell'autonomia fare riferimento alla tabella
For autonomy management refer to the table

- opzione disponibile - *available option*

• opzione disponibile - <i>available option</i>			Azione locale su singolo apparecchio <i>Local action on a single device</i>
CONFIGURAZIONI E COMANDI - <i>CONFIGURATION AND COMMANDS</i>		senza APP without APP	con APP
CONFIGURAZIONI <i>CONFIGURATION</i>	Autonomia- <i>Duration</i> 1h	• Default	• Default
	Autonomia- <i>Duration</i> 1,5h		•
	Autonomia- <i>Duration</i> 2h		•
	Autonomia- <i>Duration</i> 3h	• con jumper	•
	Autonomia- <i>Duration</i> 8h		•
	Settaggio SE/SA (solo su lampade SA) <i>Setting Non-maintained/Maintained (only on Maintained Luminaire)</i>		•
	Settaggio pari/dispari AT / <i>Setting even/odd AT</i>	• Definito dall'ID del QR code. Non modificabile • <i>Preset by ID of QR code. Cannot be modified</i>	•
	Durata Test 1h/ pari all'autonomia scelta / <i>Test duration 1h or autonomy set</i>	• Durata Test 1h • <i>Test duration 1h</i>	•
COMANDI E FUNZIONI - COMMANDS AND FUNCTIONS	Reset di fabbrica / <i>Manufacturer data reset</i>		•
	Start/Stop Test Funzionale / <i>Start/Stop functional Test</i>		•
	Sync Test automatico / <i>Sync automatic Test</i>		•

Utilizzo con App B.connect - Use with App B.connect

Disponibile su
App Store

Disponibile su
Google play

Available on the
App Store

Get it on
Google play

POSIZIONAMENTO LAMPADA PER COPERTURA APP B.connect
(es. molta luce - minore distanza)

*POSITION LAMP FOR COVER ENSURE THE PROGRAM
(eg. a lot of light - less distance)*

 **Test emergenza:** Test funzionale; stop Test

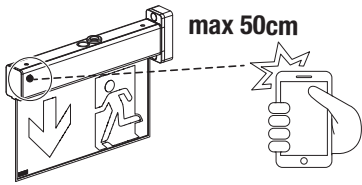
 **Test emergency:** functional Test; stop Test

RISPOSTA LAMPADA:

1 lampeggio alta luminosità= funzione eseguita
5 lampeggi bassa luminosità= funzione NON abilitata
Nessun lampeggio= comando NON ricevuto

LAMP RESPONSE:

1 high brightness flash= function performed
5 low light flashes= function NOT enabled
No flashing= command NOT received



SEGNALAZIONI LED

PERIODICITA' DEI TEST AUTOMATICI:

TEST FUNZIONALE (30 sec)= ogni 28 giorni
TEST DI AUTONOMIA (1h)= ogni 26 settimane
Le lampade pari eseguono il Test di autonomia 1 settimana dopo quelle dispari.

VERDE FISSO	BATTERIA CARICA
VERDE LAMPEGGIANTE	BATTERIA IN RICARICA
UN LAMPEGGIO ROSSO	ERRORE BATTERIA AUTONOMIA
DUE LAMPEGGI ROSSI	ERRORE LED DI ILLUMINAZIONE
TRE LAMPEGGI ROSSI	BATTERIA SCOLLEGATA

APERTURA DELLA COMUNICAZIONE DA APP:

Togliere e ridare la rete per meno di 3 secondi.

Test Funzionale e STOP Test funzionale sono comandati da App B.Connect in qualunque momento senza dover aprire la comunicazione con l'apparecchio.

AVVERTENZE - GARANZIA

- Questo apparecchio dovrà essere destinato solo all'uso per il quale è stato costruito. Ogni altro uso è da

- Batteria Ricaricabile e sorgente LED sono di tipo non sostituibile. Per eventuali riparazioni rivolgersi ad un centro di assistenza tecnica autorizzato e richiedere l'utilizzo di ricambi originali. Il mancato rispetto di quanto sopra può compromettere la sicurezza dell'apparecchio.

LED SIGNALS

AUTOMATIC TESTS PERIODICITY:

FUNCTIONAL TEST (30 sec)= every 28 days
AUTONOMY TEST (1h)= every 26 weeks
Even lamps carry out the autonomy test 1 week after the odd lamps.
(0,2,...,8,A,C,E)= even; (1,3,...,9,B,D,F)= odd.

FIXED GREEN	BATTERY CHARGED
FLASHING GREEN	BATTERY CHARGING
ONE RED FLASH	BATTERY ERROR DURATION
TWO RED FLASHES	LIGHTING LED ERROR
THREE RED FLASHES	BATTERY DISCONNECTED

OPENING THE COMMUNICATION FROM APP:

Remove and reset the network for less than 3 seconds.

The Functional Test and the Functional STOP Test are controlled by the B.Connect App at any time without having to open communication with the device.

WARNINGS - GUARANTEE

- This device shall be used exclusively for the purpose for which it has been designed. Any other use is con-

- Rechargeable battery and LED source are non-replaceable type. Contact an authorised technical service centre for any repairs possibly required use only original spare parts.

The lacked respect of the above conditions may compromise the safety of the device.